

Erasmus Plus Project you'R Nature,you'R Future (2022-2025)



5th Volos Highschool



Sustainable transport

- Sustainable transport refers to ways of transportation that are sustainable in terms of their social and environmental impacts.





Components for evaluating sustainability include the particular vehicles used for road, water or air transport; the source of energy; and the facilities used to accommodate the transport

move ▶ green

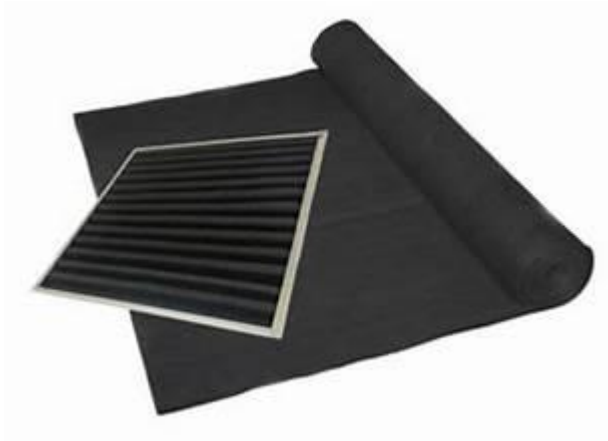


Transport operations as well as [transit development](#) are also involved in evaluation. Transportation sustainability is largely being measured by transportation system effectiveness and efficiency as well as the [environmental](#) and [climate](#) impacts of the system. Transport systems have significant impacts on the environment, accounting for between 20% and 25% of [world energy consumption](#) and [carbon dioxide emissions](#).



The main source of greenhouse gas emissions in the European Union is transportation. In 2019 it contributes to about 31% of global emissions and 24% of emissions in the EU. In addition, up to the COVID-19 pandemic, emissions have only increased in this one sector. Greenhouse gas emissions from transport are increasing at a faster rate than any other energy using sector. Road transport is also a major contributor to local [air pollution](#) and [smog](#).

Sustainable transport systems make a positive contribution to the environmental, social and economic sustainability of the communities they serve. Transport systems exist to provide social and economic connections, and people quickly take up the opportunities offered by increased [mobility](#), with poor households benefiting greatly from [low carbon](#) transport options.

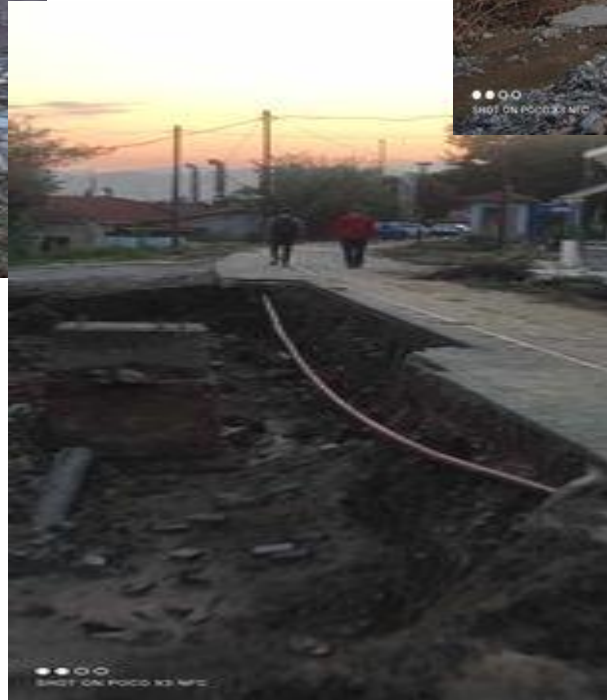


According to the Copernicus Climate Change Service 2022 was the hottest summer and the second warmest year on record. Most evidence suggests that this is due to the increase in greenhouse gas emissions produced by human activity. The average global temperature today is 0.95-1.20°C higher than in the 19th century. Scientists believe that global warming must be kept below the maximum limit of +2°C, compared to pre-industrial levels, in order to avoid catastrophic consequences for the climate and the environment.

In 2021 the EU made legally binding the EU's goal of climate neutrality by 2050 and set the intermediate goal of reducing emissions by 55% by 2030. This goal is enshrined in the Climate Act. The European Green Deal is the road map to make the EU climate-friendly by 203

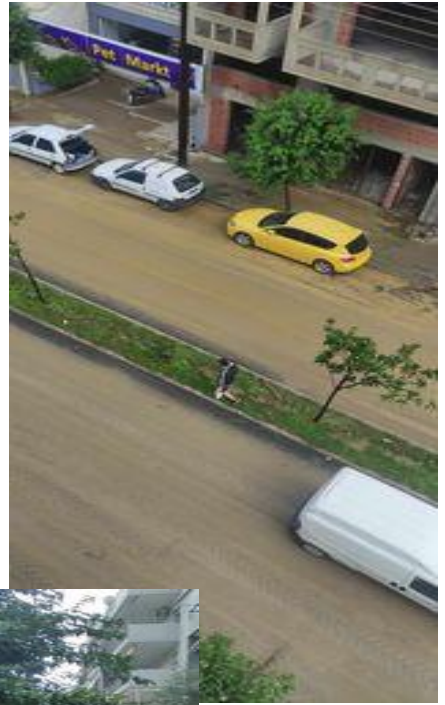


Images after the flood











- Hope not to happen again we want a clean and safe city back

